



**KENSINGTON**<sup>®</sup>

Finest Properties International



## general:

---

<b>object number external:</b>	Kensington_KRW_301	<b>as from:</b>	21.11.2024
<b>usage:</b>	habitation	<b>marketing method:</b>	purchase
<b>property:</b>	House	<b>construction year:</b>	1608
<b>place:</b>	27257 Sudwalde	<b>living space:</b>	754,36 m <sup>2</sup>
<b>Floor space:</b>	640,00 m <sup>2</sup>	<b>rentable space:</b>	754,36 m <sup>2</sup>
<b>Total size of site:</b>	14.600,00 m <sup>2</sup>	<b>Number of Rooms:</b>	33,0
<b>Number of bedrooms:</b>	17,0	<b>Number of bathrooms:</b>	9,0
<b>number of parking spaces:</b>	11,0	<b>Condition:</b>	part / full renovated

## prices:

---

<b>purchase price:</b>	1.730.000,00 €	<b>broker's fee:</b>	5,95 % inkl. 19 % gesetzl. MwSt.
------------------------	----------------	----------------------	----------------------------------

## energy certificate:

---

<b>type of energy ID:</b>	VERBRAUCH	<b>expiry date:</b>	2031-04-08
<b>age group:</b>	2014	<b>value class:</b>	D
<b>beaconing:</b>	gas	<b>primary energy sources:</b>	GAS
<b>energy consumption value:</b>	118.00 kWh/m <sup>2</sup> /a		

## contact person:

---

<b>company:</b>	Finest Properties Rotenburg GmbH	<b>name:</b>	Paulina Mikolajczuk
<b>street:</b>	Harburger Straße 8	<b>place:</b>	27356 Rotenburg (Wümme)
<b>phone:</b>	0170 680 4669	<b>Email</b>	paulina.mikolajczuk@kensington-international.com

## Infrastructure:

---

<b>Bus at :</b>	2 km	<b>Intercity train station at :</b>	8 km
-----------------	------	-------------------------------------	------

# images

Flur Wohnung EG rechts



Ruheoase mit Pferden im Garten Wohnung EG rechts



Terrasse Wohnung EG rechts



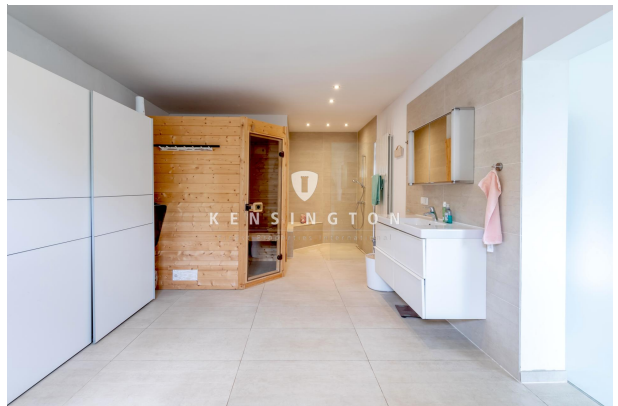
Garten/Außenbereich



Wohnzimmer Wohnung EG links



Bad Wohnung EG links





Appartment



Bad Appartment



Weiden/Außenbereich



Weiden/Außenbereich



Wohnhaus Rückseitig



Lagerfläche Halle

